

96000 Series Pneumatic Pressure Controller (for Industrial and Sanitary Applications)

Economical and compact pressure instrument for control of steam, gases, and liquids.

The sanitary unit has a self-draining design which allows for clean-in-place (CIP) and sanitize-in-place (SIP) procedures and is used for the control of high purity steam, gases, and fluids.

The all pneumatic design enables operation without costly electronic pressure transmitters, controllers and current to pneumatic valve signal converters.



96000 INDUSTRIAL CONTROLLER

FEATURES:

- Adjustable Dynamic Characteristic (Sensitivity)
- Extremely Compact & Economical (Only 7 inches total height)

SANITARY VERSION INCLUDES:

- Double Diaphragm Seal Assures Process Isolation
- Available Tell-Tale Pressure Connection
- Self-Draining Sensing Connection
- Sanitary model is 3-A Standards Council approved.

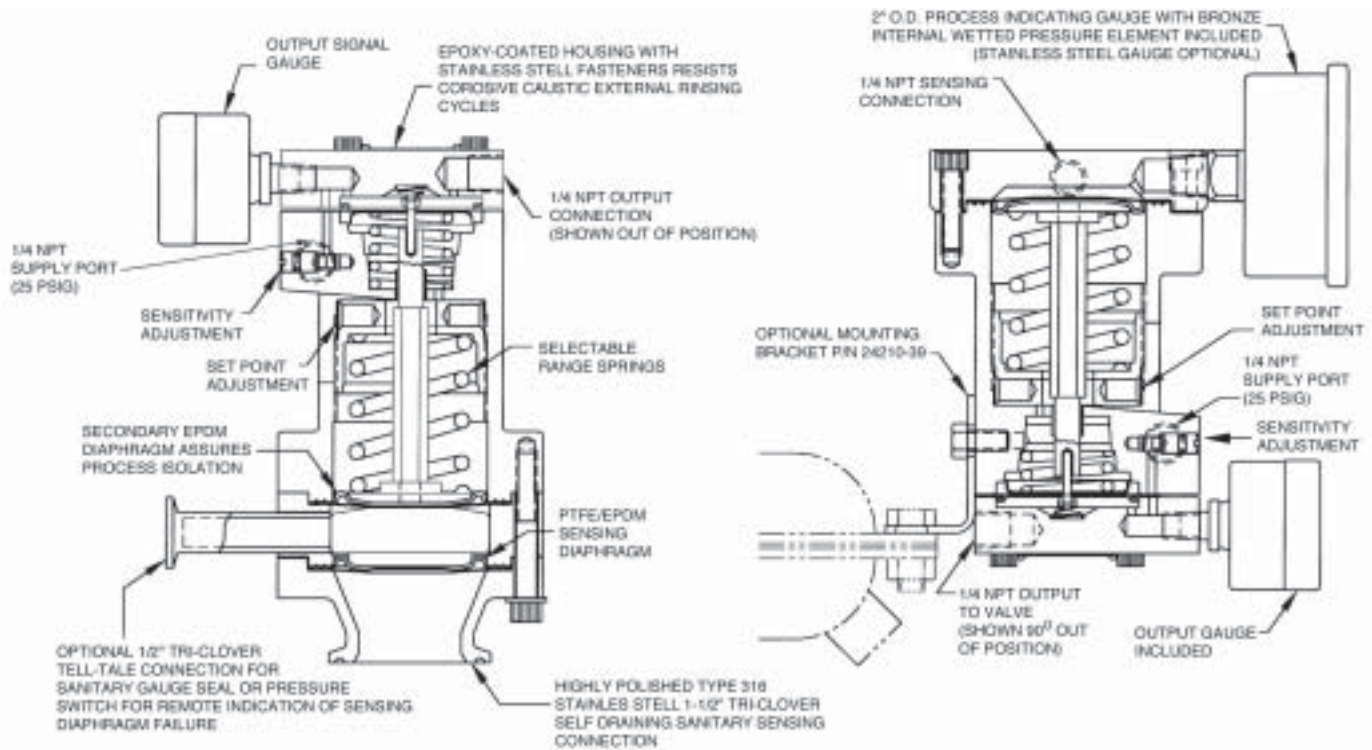


96000 SANITARY CONTROLLER

BAUMANN


EMERSON
Process Management

96000 CONTROLLER



DWG M96000-2

Sanitary Controller for High Purity Media Applications

Industrial Controller for Non-Sanitary Applications

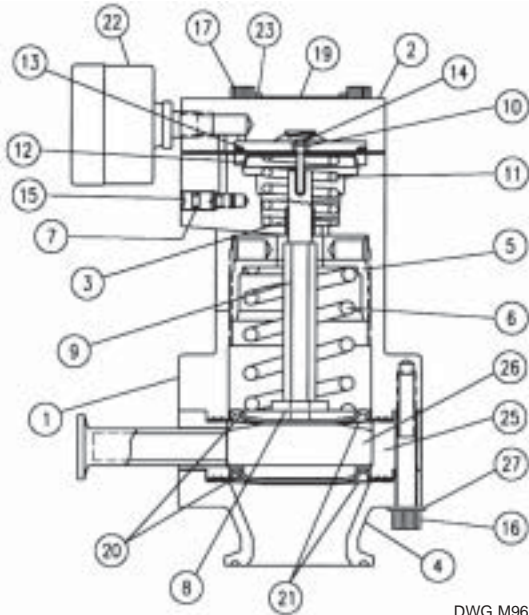
TECHNICAL SPECIFICATIONS

	SANITARY	INDUSTRIAL
WETTED PARTS	Type 316 Stainless Steel and PTFE	Type 316 Stainless Steel and PTFE
PROCESS CONNECTIONS	Size 1-1/2 in Tri-Clover, Tri-Clamp	1/4 in NPT
PROCESS INDICATING GAUGE(OPTIONAL)	N/A	Range 0-30, 0-60 and 0-200 Psi (0-2.07 bar / 0-4.14 bar / 0-13.79 bar)
INTERNAL FINISH	<= 20 RaMicroinch / 0.51 Ra Micron	Factory Standard
SENSING DIAPHRAGMS	PTFE / EPDM	
MAXIMUM FLUID TEMPERATURE	300°F / 148.8°C	
MAXIMUM WORKING PRESSURE	150 psi / 10.34 bar	
ADJUSTABLE SPRING RANGES	2-5 psig / 5-20 psig / 15-65 psig / 50-150 psig (0.14-0.34 bar / 0.34-1.38 bar / 1.02-4.48 bar / 3.45-10.34 bar)	
OUTPUT SIGNAL	3-15 psig (0.21-1.0 bar) (Increase in process pressure above set point decreases output signal to valve)	
OUTPUT AIR PRESSURE GAUGE	Range 0-30 Psi / 0-2.07 bar	
PROPORTIONAL BAND	Fixed (Approx. 20% of max. set point for 100% valve travel, standard)	
STEADY STATE AIR CONSUMPTION	0.4 SCFM at 20 psig Air Supply	
APPLICATION STANDARD	3-A Certified	N/A

BULLETIN

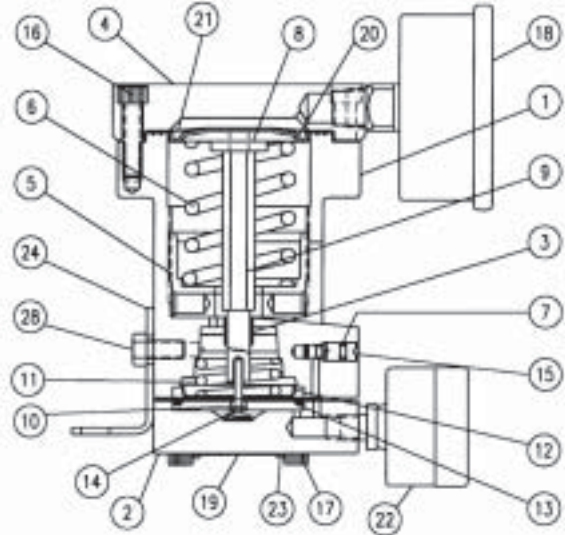
96.1:PC
February 2003

96000 CONTROLLER



DWG M96102 R01

Sanitary Controller



DWG M96103 R02

Industrial Controller

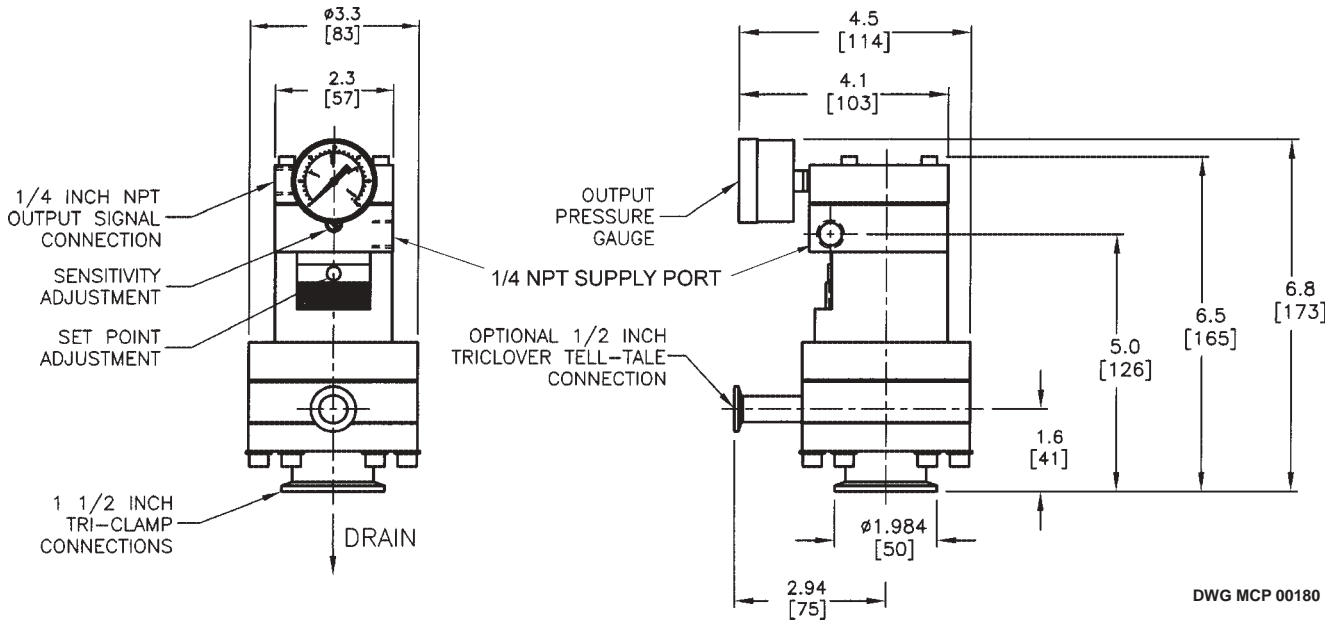
MATERIALS OF CONSTRUCTION

KEY NO.	DESCRIPTION	SANITARY	INDUSTRIAL
		MATERIAL	
1	Housing	Cast Aluminum	
2	Base Plate	Cast Aluminum	
3	Guide Bushing	Garlock #05DU06 Steel / Bronze	
4	Housing Cover with 1/4 in NPT sensing connection	ASTM A479 S31600/S31603 Dual Certified Annealed	
5	Spring Adjusting Screw	303 Stainless Steel	
6	Range Spring	Stainless Steel	
7	O-Ring	Chloroprene	
8	Spring Button	ASTM B16 C3600 H02 Brass	
9	Stem	316 Stainless Steel	
10	Pilot Plug	316 Stainless Steel	
11	Feedback Spring #1, 3-15 psi (0.21 - 1.0 bar)	Music Wire	
	Feedback Spring, 5 psi span (0.34 bar)	Stainless Steel	
12	Diaphragm Plate	304 Stainless Steel	
13	Diaphragm, Feedback	Buna-N	
14	Spring, conical	304 Stainless Steel	
15	Gain Screw	303 Stainless Steel	
16	Hex Head Cap Screws	18-8 Stainless Steel	
17	Hex Head Cap Screws	18-8 Stainless Steel	
18	Process Indicating Gauge (Optional)	N/A	Stainless Steel
19	Serial Plate	304 Stainless Steel	
20	Sensing Diaphragm	EPDM	
21	Sensing Diaphragm	PTFE	
22	Gauge, Output Air Pressure (Standard)	Steel Case	
23	Drive Screw	18-8 Stainless Steel	
24	Mounting Bracket	N/A	18-8 Stainless Steel
25	Spacer	316 Stainless Steel	N/A
26	Piston	Nitronic 60	N/A
27	Washers	Stainless Steel	N/A
28	Hex Head Cap Screw	N/A	18-8 Stainless Steel

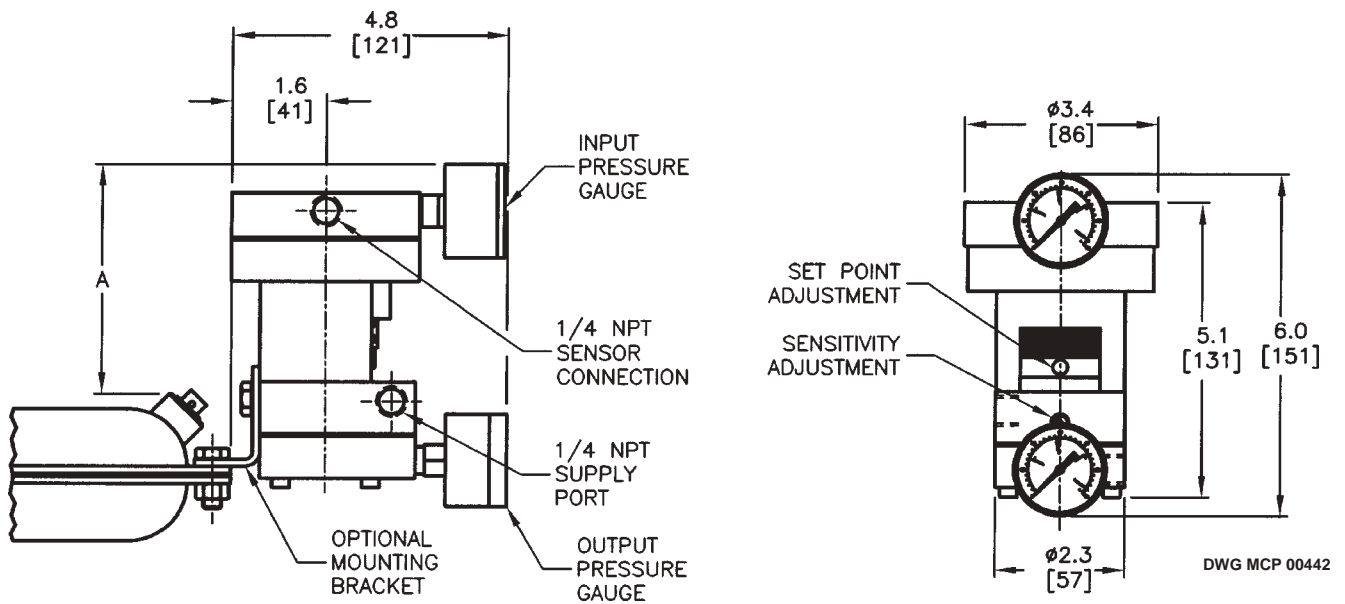
96000 CONTROLLER

DIMENSIONS

Sanitary Controller (Remote Mounted)



Industrial Controller (Actuator Mounted)

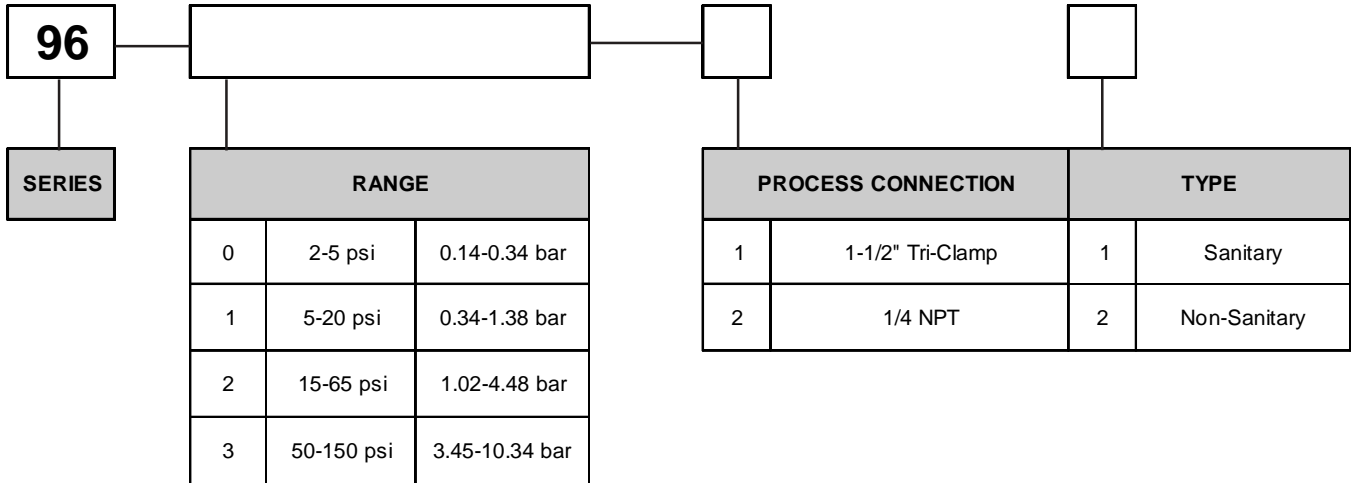


ACTUATOR SIZE	DIMENSION A	
	in	mm
32	4.0	103
54	3.5	89

WEIGHTS

96000 Sanitary Controller		96000 Industrial Controller	
lbs	KG	lbs	KG
5.0	11.0	4.0	8.8

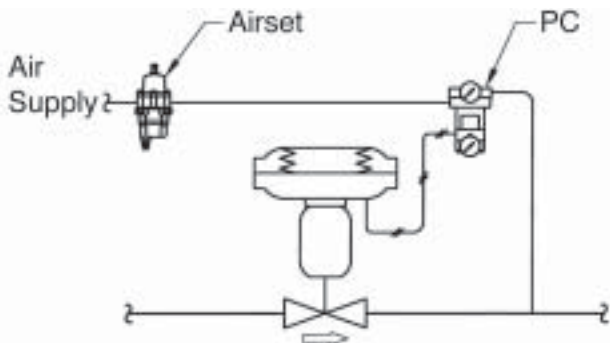
MODEL NUMBERING SYSTEM



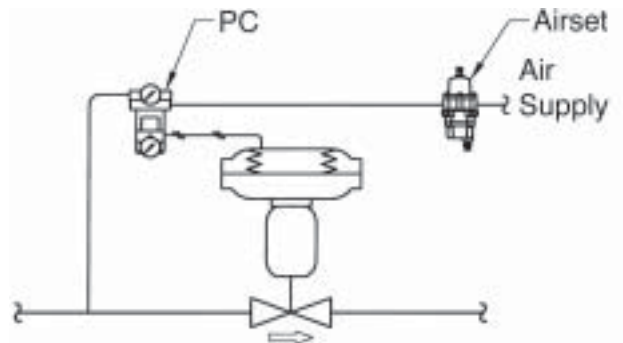
OPERATING CONFIGURATIONS

TYPE OF SERVICE	VALVE TO FAIL	POSITIONER REQUIRED
Pressure Reducing (Downstream of valve)	"Close" Specify air-to-open actuator	No
Pressure Reducing (Downstream of valve)	"Open" Specify air-to-close actuator	Yes, Reverse Type Action 3-15 psi in = 15-3 psi out (0.21-1.0 bar = 1.0-0.21 bar out)
Pressure Relieving (Upstream of valve)	"Open" Specify air-to-close actuator	No
Pressure Relieving (Upstream of valve)	"Close" Specify air-to-open actuator	Yes, Reverse Type Action 3-15 psi in = 15-3 psi out (0.21-1.0 bar = 1.0-0.21 bar out)

PRESSURE REDUCING

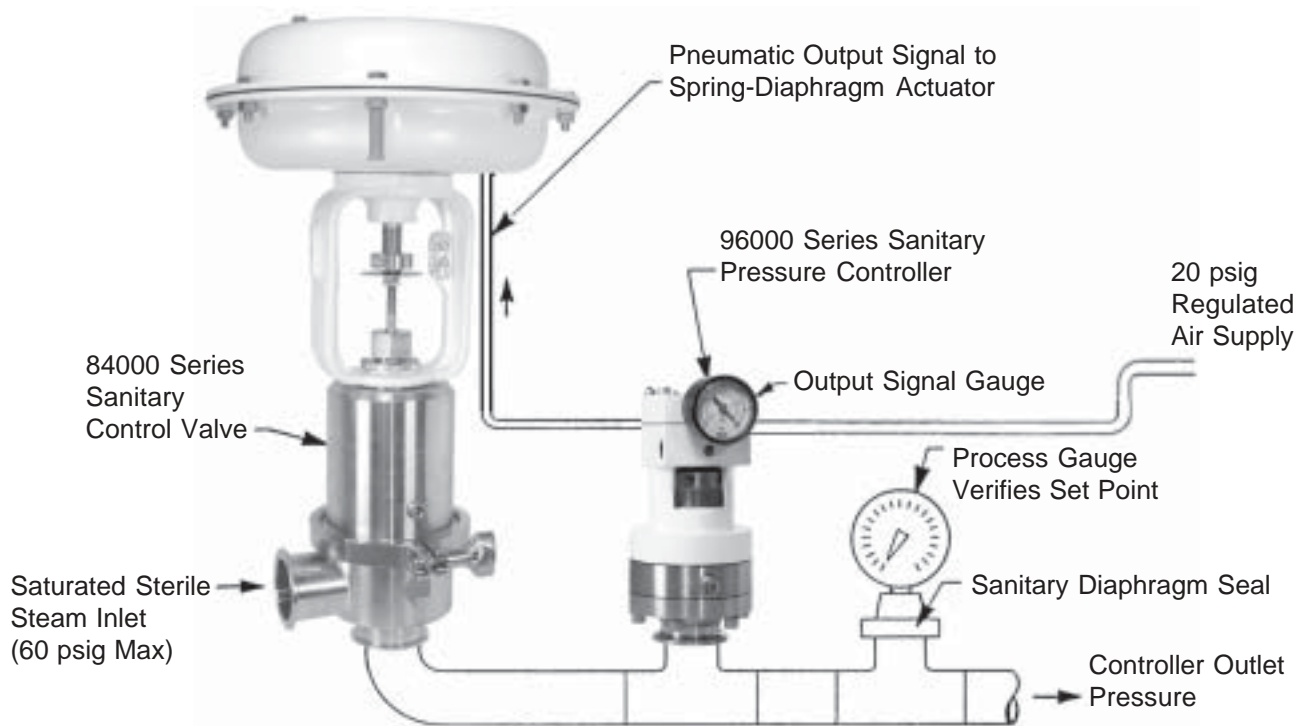


PRESSURE RELIEVING



96000 CONTROLLER

TYPICAL INSTALLATION OF SANITARY CONTROLLER FOR HIGH PURITY MEDIA APPLICATIONS



This product may be covered under one or more of the following patents 5,163,464 or under pending patent applications.

The Emerson logo is a trademark and service mark of Emerson Electric Co. FIELDVUE and FloVue are marks owned by Baumann Inc., Fisher Controls International LLC or Fisher-Rosemount Systems, Inc. All other marks are the property of their respective owners.

The contents of this publication are presented for informational purposes only, and while every effort has been made to ensure their accuracy, they are not to be construed as warranties or guarantees, express or implied, regarding the products or services described herein or their use or applicability. We reserve the right to modify or improve the designs or specifications of such products at any time without notice.

Emerson Process Management Baumann Inc.

130 International Drive
Portsmouth, NH 03801
T 1 (603) 766-8500
F 1 (603) 766-8590
www.baumann.com